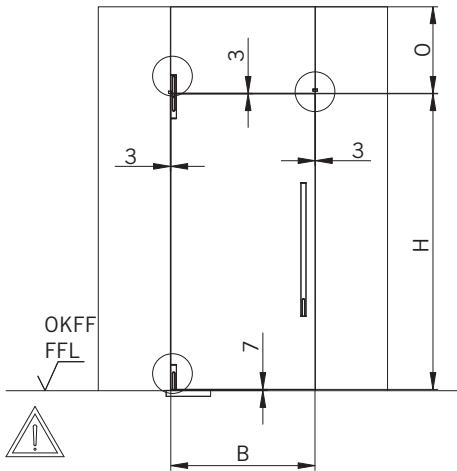


**Montageanleitung  
DORMA BEYOND  
Oberlichtbeschlag Glasverbinder**

**Mounting instruction  
DORMA BEYOND  
Overpanel fitting glass connector**

Montážní návod  
Beyond - kování na celoskleněné otočné dveře  
v celoskleněné stěně



siehe Schritt 7  
see step 7

max. Höhe = 2200 mm  
 max. Breite = 1000 mm  
 max. Oberlicht = 600 mm  
 Glasdicke 10 mm / 12 mm  
 Vor der Montage Glasflächen mit handelsüblichem Glasreiniger im Bereich der Klemmflächen reinigen.

max. height: = 2200 mm  
 max. width = 1000 mm  
 max. overpanel = 600 mm  
 Glass thickness 10 mm / 12 mm  
 All glass clamping areas are to be cleaned with standard glass cleaning products prior to installation.



Keine Verdünnung verwenden  
 Do not use thinner

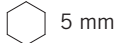
① = Bauteil / Baugruppe  
 Component

1., 1.1, ... = Montagefolge  
 Mounting sequence

**Montagewerkzeug:**  
**Mounting tool:**



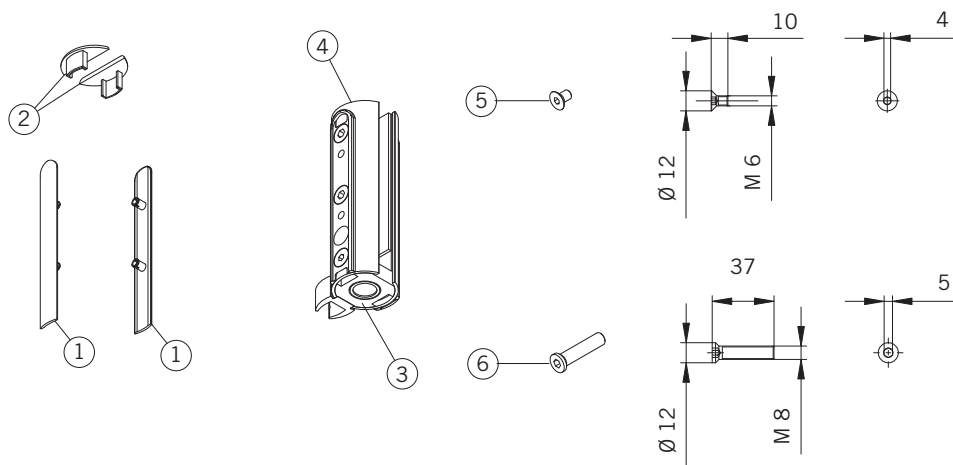
4 mm



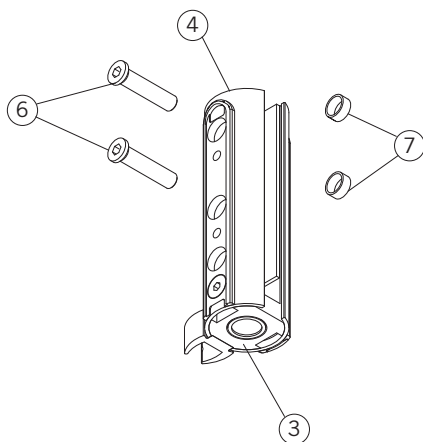
5 mm



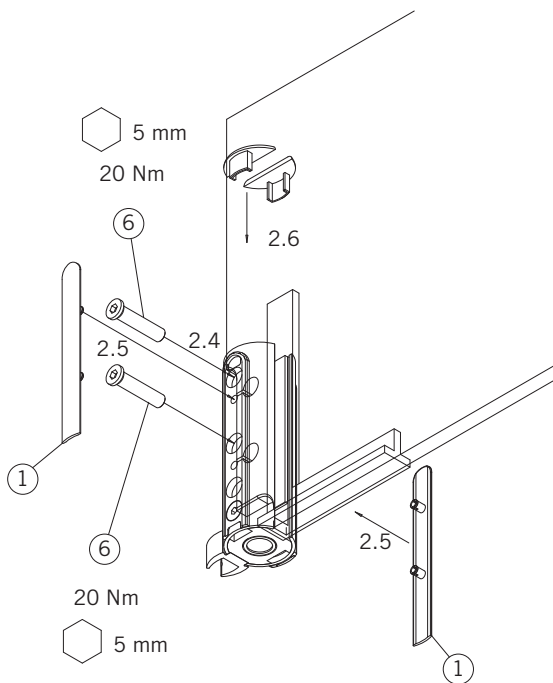
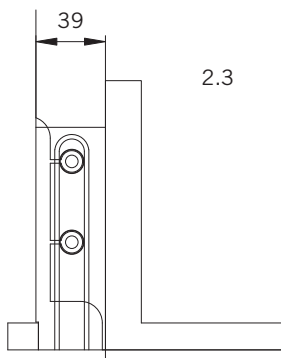
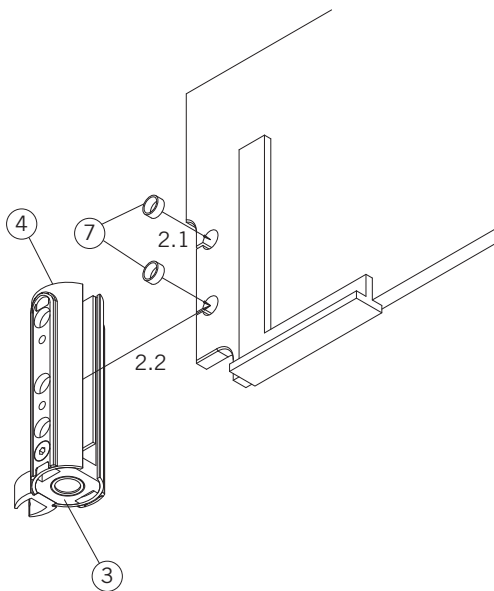
Lieferumfang:  
Scope of delivery:



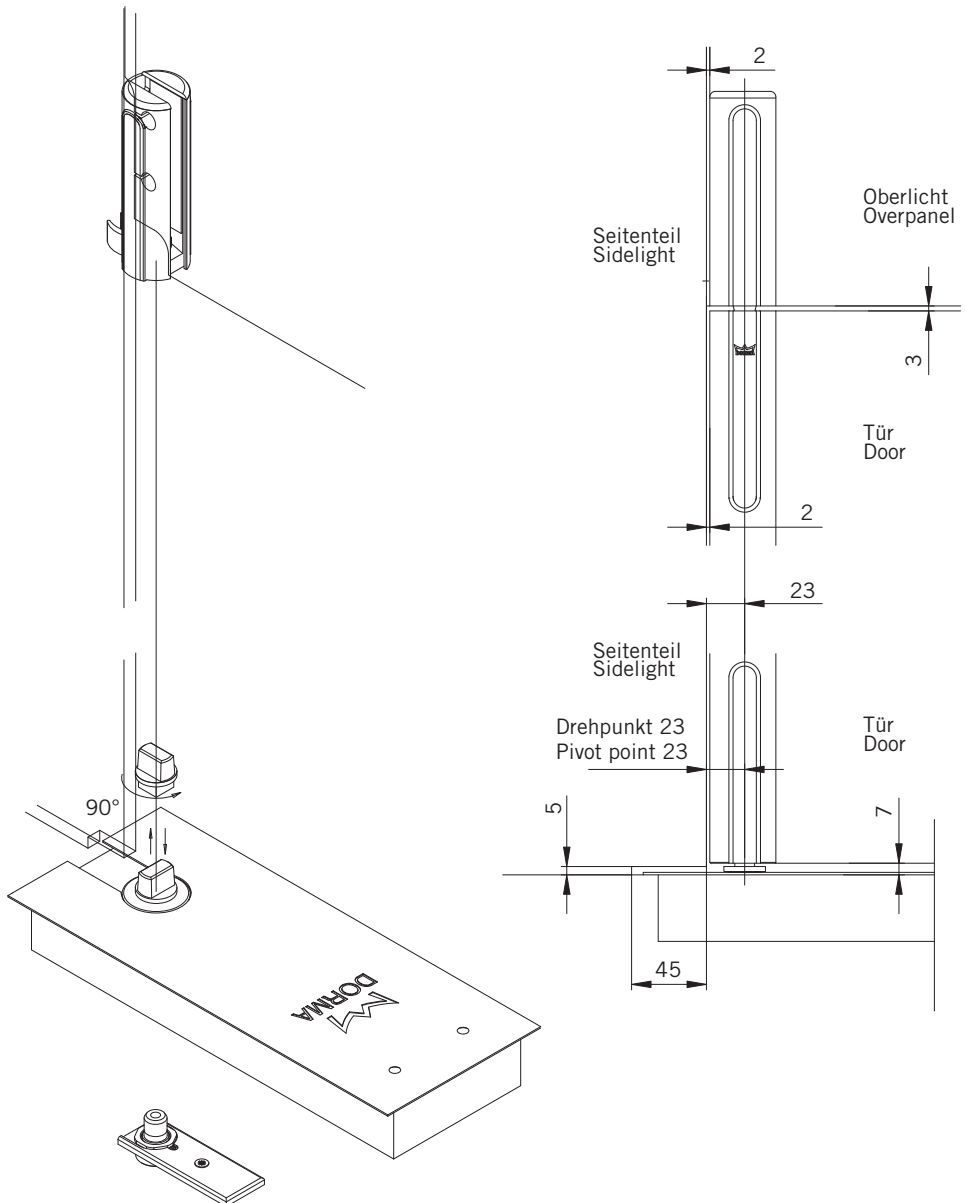
1. Oberlichtbeschlag demontieren
1. Dismount overpanel fitting



**2. Oberlichtbeschlag am Glas montieren**  
**2. Mount overpanel fitting to glass**



4. Oberlichtbeschlag und BTS oder Bodenlager montieren
4. Mount overpanel fitting and floor spring (DORMA BTS) or floor pivot bearing



**5. Türmontage**  
**5. Door assembly**

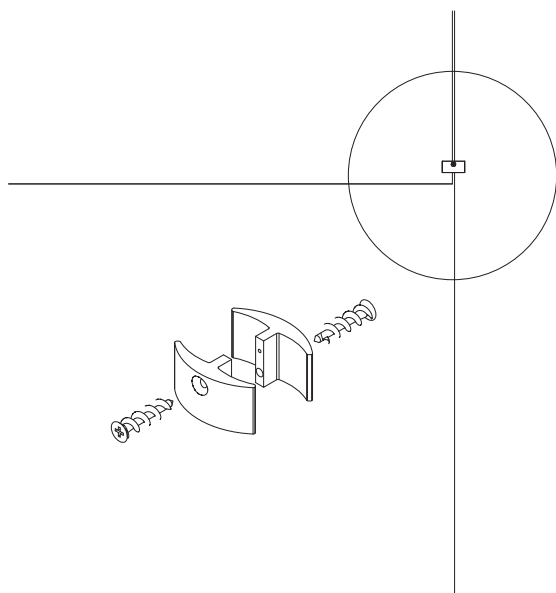
Die Montageanleitung hierfür finden Sie in den entsprechenden Beschlagsets.  
You will find the mounting instruction in the appropriate fitting sets.

**BEYOND Glasverbinder Art.-Nr. 30.320**

optional bei Situation mit beidseitigen Seitenteilen. Bauseits.

**BEYOND glass connector Art. No. 30.320**

optional in situations with fixed panels on both sides. On site.



**Montageanleitung  
DORMA BEYOND  
Drehbeschlag kurz**

**Mounting instruction  
DORMA BEYOND  
Pivoting fitting, short type**

T [ } a 0 } ö | ç [ å  
Ó ^ [ ] å Ä [ ç ] ö æ [ • \ | ^ } } . Ä d } . Ä ç ^ ^ Ä | | d | Ä ^ | : ^ Ä

## DORMA BEYOND, Drehbeschlagset kurz

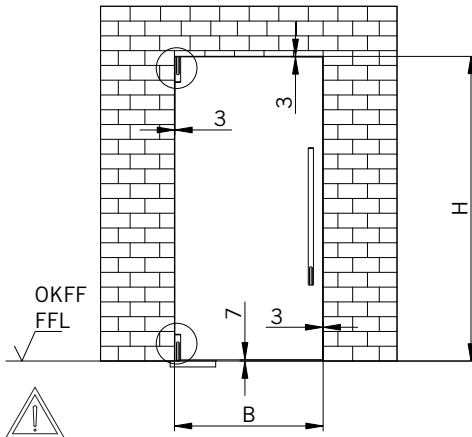
Montageanleitung für Oberlichtbeschlag Wandverbinder liegt dem Beschlag bei.

Montageanleitung für Oberlichtbeschlag Glasverbinder liegt dem Beschlag bei.

## DORMA BEYOND, pivoting fitting, short type

Assembly instructions for mounting with overpanel to wall.

Assembly instructions are supplied for mounting with overpanel and side panel.



siehe Schritt 5  
see step 5

max. Höhe = 2200 mm  
max. Breite = 1000 mm  
Glasdicke 10 mm / 12 mm

Vor der Montage Glasflächen mit handelsüblichem Glasreiniger im Bereich der Klemmflächen reinigen.

max. height = 2200 mm  
max. width = 1000 mm  
Glass thickness 10 mm / 12 mm

All glass clamping areas are to be cleaned with standard glass cleaning products prior to installation.



Keine Verdünnung verwenden  
Do not use thinner

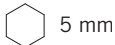
① = Bauteil / Baugruppe  
Component

1., 1.1, ... = Montagefolge  
Mounting sequence

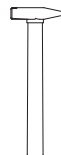
### Montagewerkzeug: Mounting tool:



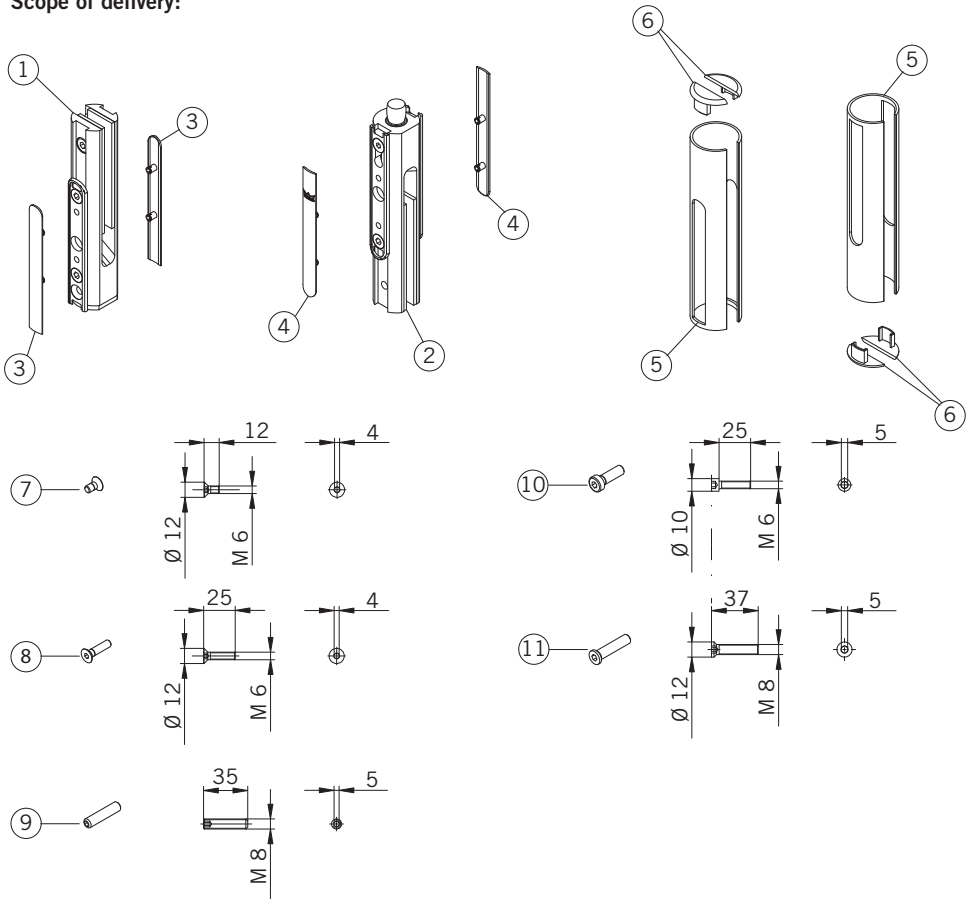
4 mm



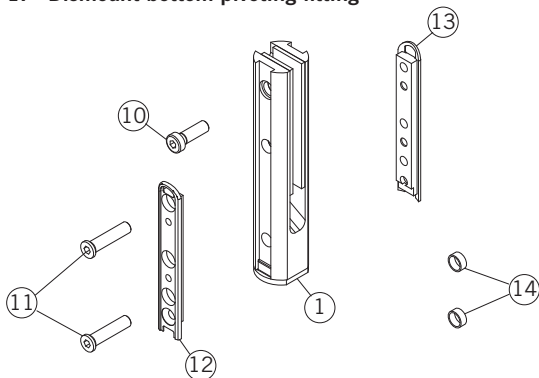
5 mm



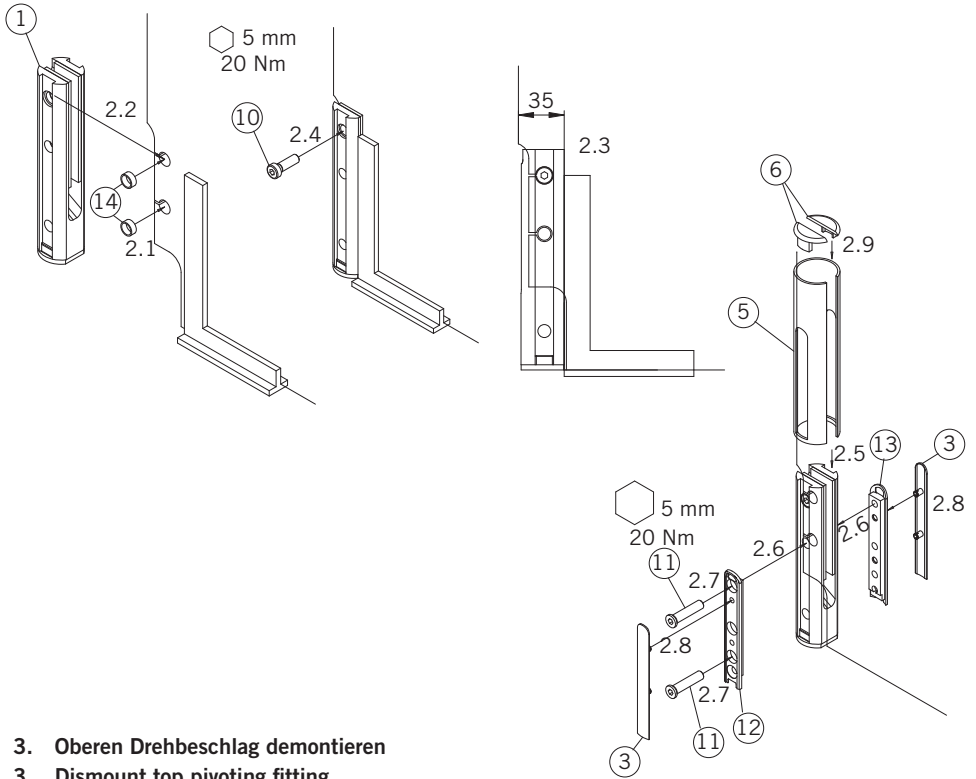
Lieferumfang:  
Scope of delivery:



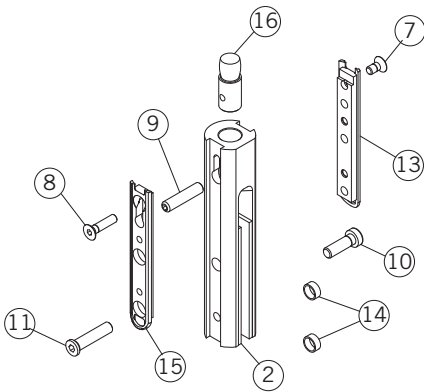
1. Unteren Drehbeschlag demontieren
1. Dismount bottom pivoting fitting



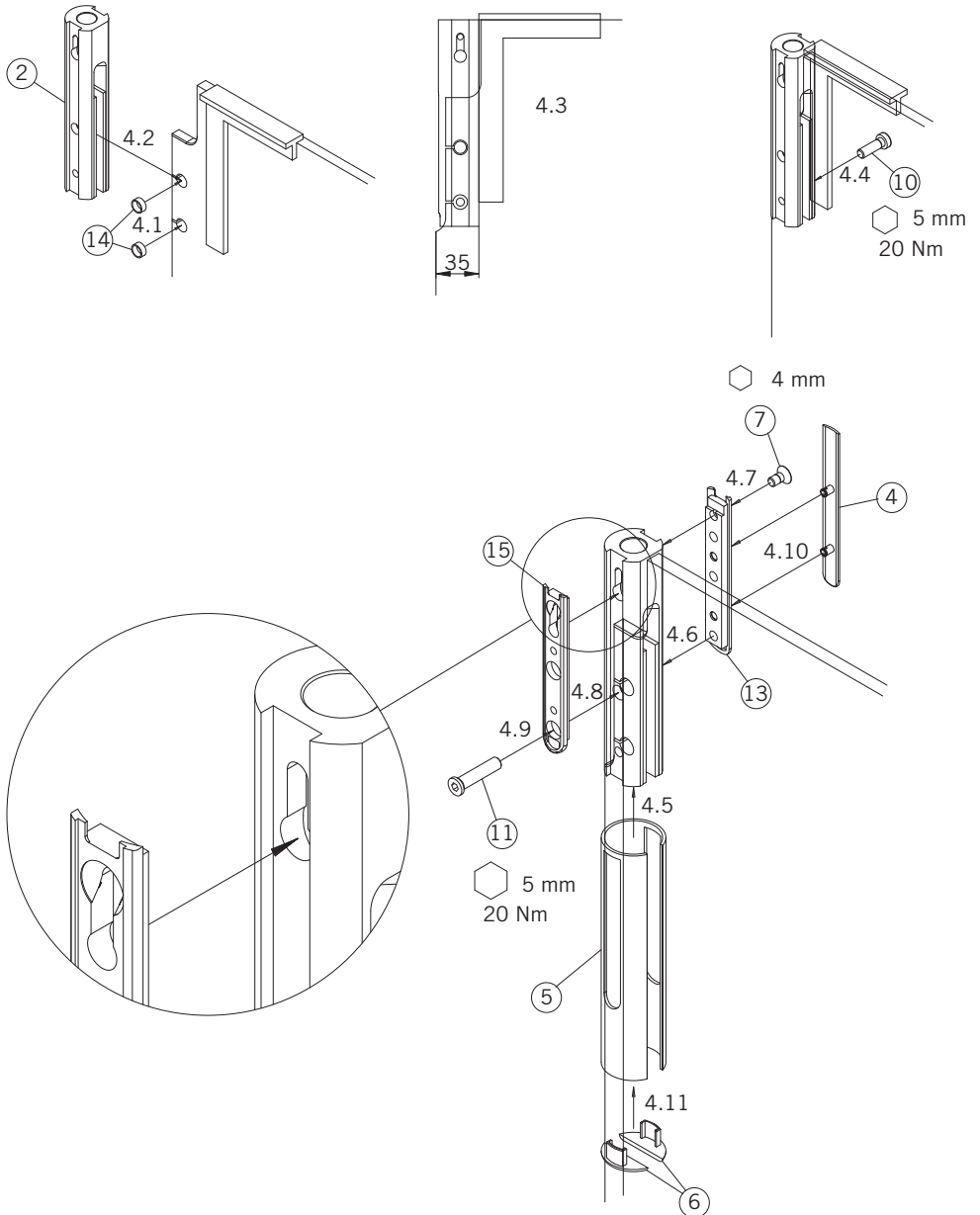
- 2. Unteren Drehbeschlag am Glas montieren
- 2. Mount bottom pivoting fitting to glass



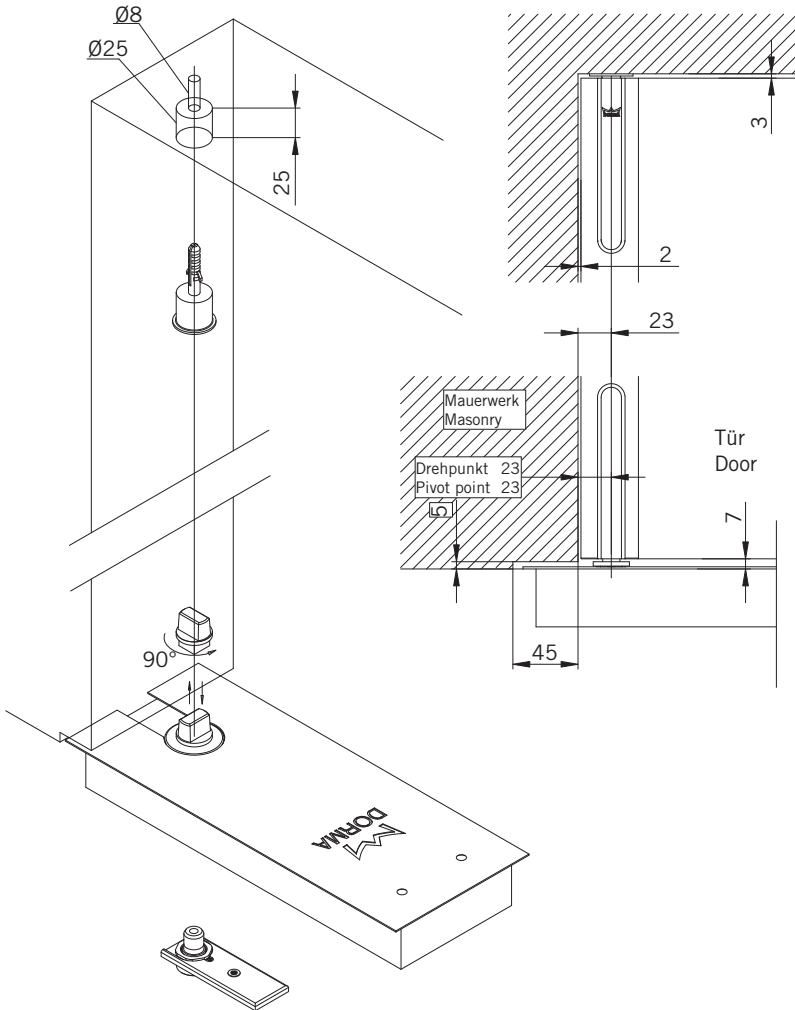
- 3. Oberen Drehbeschlag demontieren
- 3. Dismount top pivoting fitting



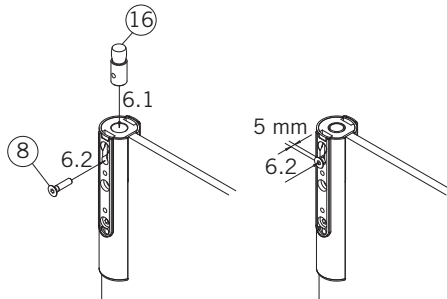
4. Oberen Drehbeschlag am Glas montieren  
 4. Mount top pivoting fitting to glass



- 5. Oberes Drehlager und BTS oder Bodenlager montieren
- 5. Mount top pivot bearing and floor spring (DORMA BTS) or floor pivot bearing

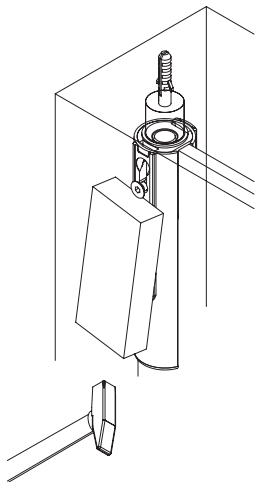


- 6. Türmontage
- 6. Door assembly

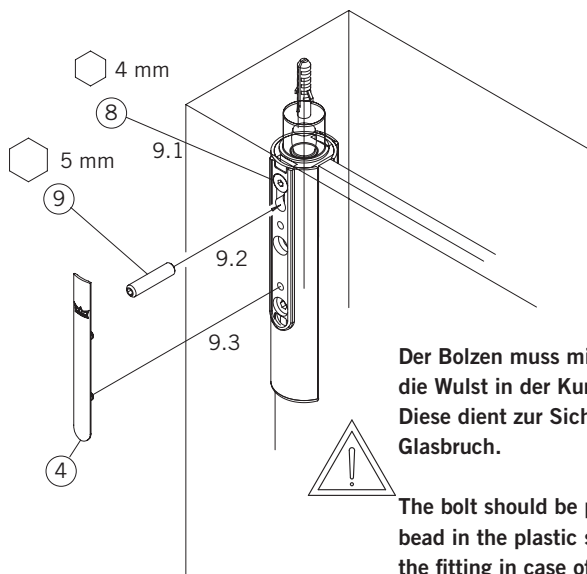


7. **Glastür auf unteres Bodenlager setzen und unter das obere Lager schwenken**
7. **Set glass door onto bottom floor pivot bearing and shift door under top bearing**

8. **Bei Deckenmontage: Bolzen zur Türmontage in Buchse schieben**
8. **If ceiling mounted, slide bolt into bushing**



9. **Bolzen festschrauben und sichern**
9. **Screw bolt and secure**



**Der Bolzen muss mit etwas Kraft eingedrückt werden, um die Wulst in der Kunststoffbuchse zu überbrücken. Diese dient zur Sicherung des Beschlags bei eventuellem Glasbruch.**

**The bolt should be pressed with some power to bridge the bead in the plastic socket, which serves as securing for the fitting in case of breakage of glass.**

**Montageanleitung  
DORMA BEYOND  
Drehbeschlag lang**

**Mounting instruction  
DORMA BEYOND  
Pivoting fitting, long type**

T [ } a 0 } ö | ç [ å  
Ó ^ [ ] å Ä [ ç ] ö æ ^ [ • \ | ^ } } . Á d } . Ä ç ^ ^ Ä | à 0 } | Á

## DORMA BEYOND, Drehbeschlag lang

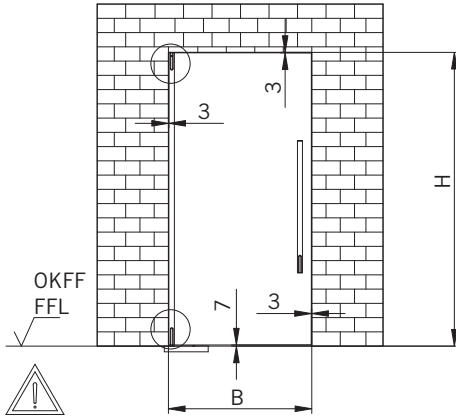
Montageanleitung für Oberlichtbeschlag Wandverbinder liegt dem Beschlag bei.

Montageanleitung für Oberlichtbeschlag Glasverbinder liegt dem Beschlag bei.

## DORMA BEYOND, Pivoting fitting, long type

Mounting instructions for overpanel fitting wall connector are supplied with the fitting.

Mounting instructions for overpanel fitting glass connector are supplied with the fitting.



siehe Schritt 7  
see step 7

max. Höhe = 2200 mm  
max. Breite = 1000 mm  
Glasdicke 10 mm / 12 mm

Vor der Montage Glasflächen mit handelsüblichem Glasreiniger im Bereich der Klemmflächen reinigen.

max. height: = 2200 mm  
max. width = 1000 mm  
Glass thickness 10 mm / 12 mm

All glass clamping areas are to be cleaned with standard glass cleaning products prior to installation.



Keine Verdünnung verwenden  
Do not use thinner

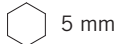
① = Bauteil / Baugruppe  
Component

1., 1.1, ... = Montagefolge  
Mounting sequence

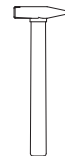
### Montagewerkzeug: Mounting tool:



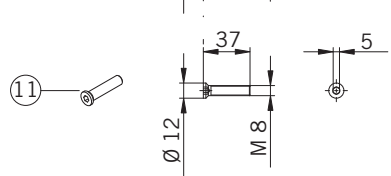
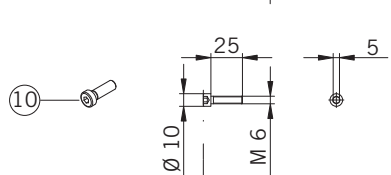
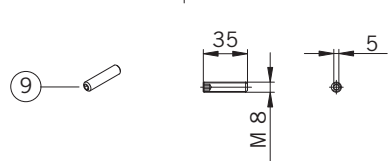
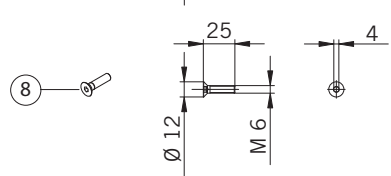
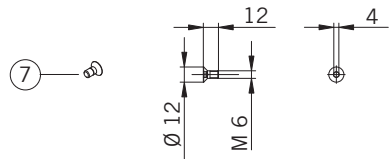
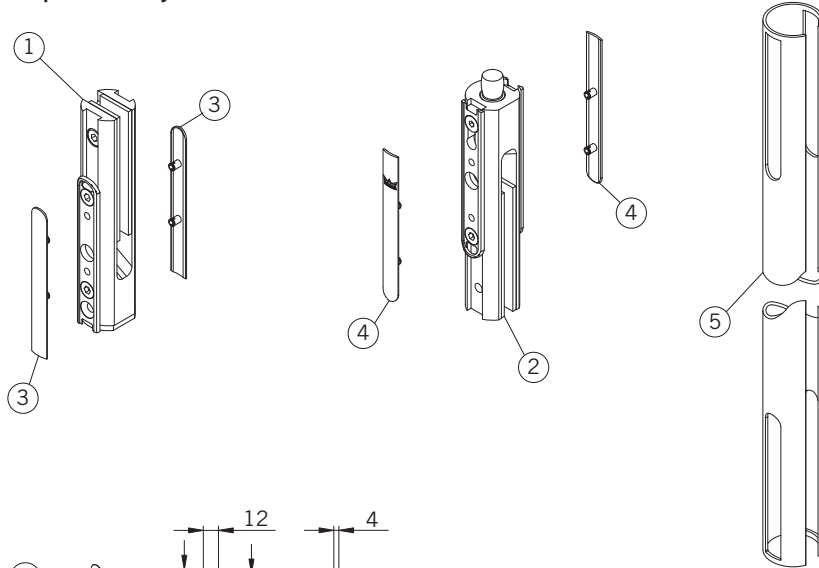
4 mm



5 mm

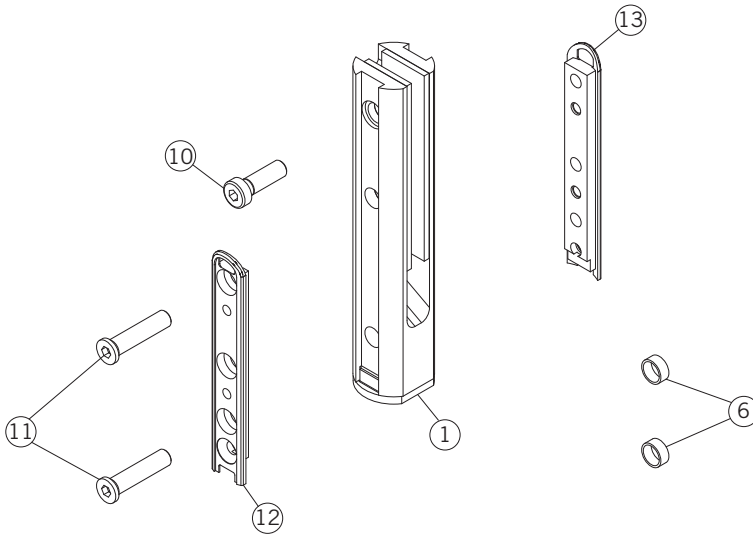


**Lieferumfang:**  
**Scope of delivery:**



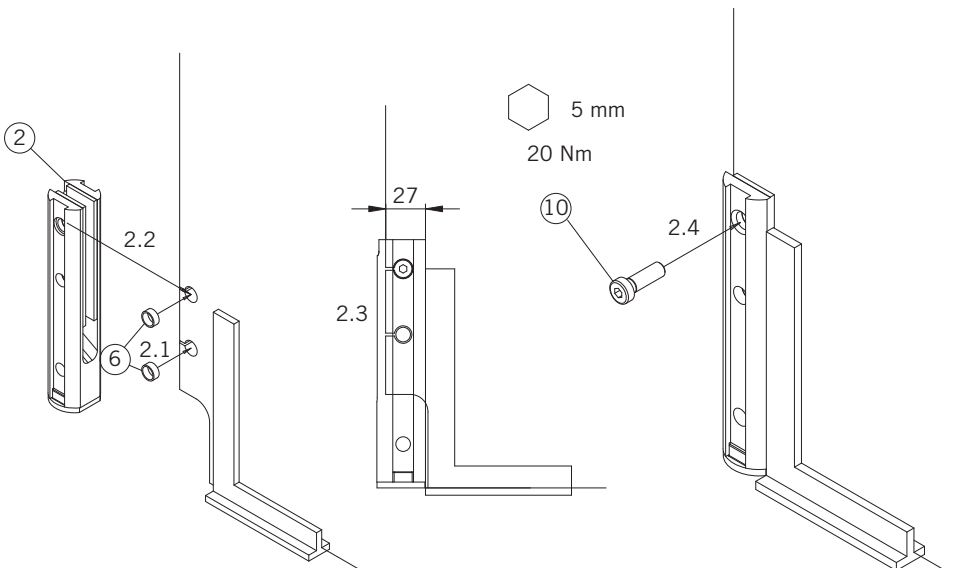
**1. Unteren Drehbeschlag demontieren**

**1. Dismount bottom pivoting fitting**

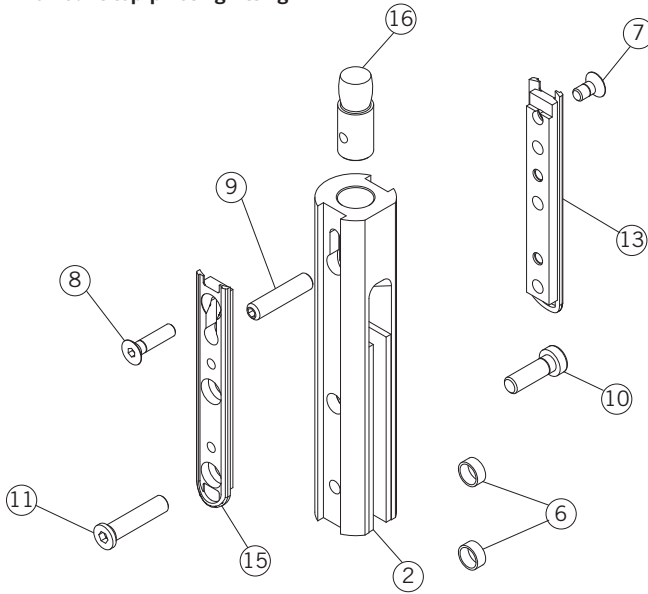


**2. Unteren Drehbeschlag am Glas montieren**

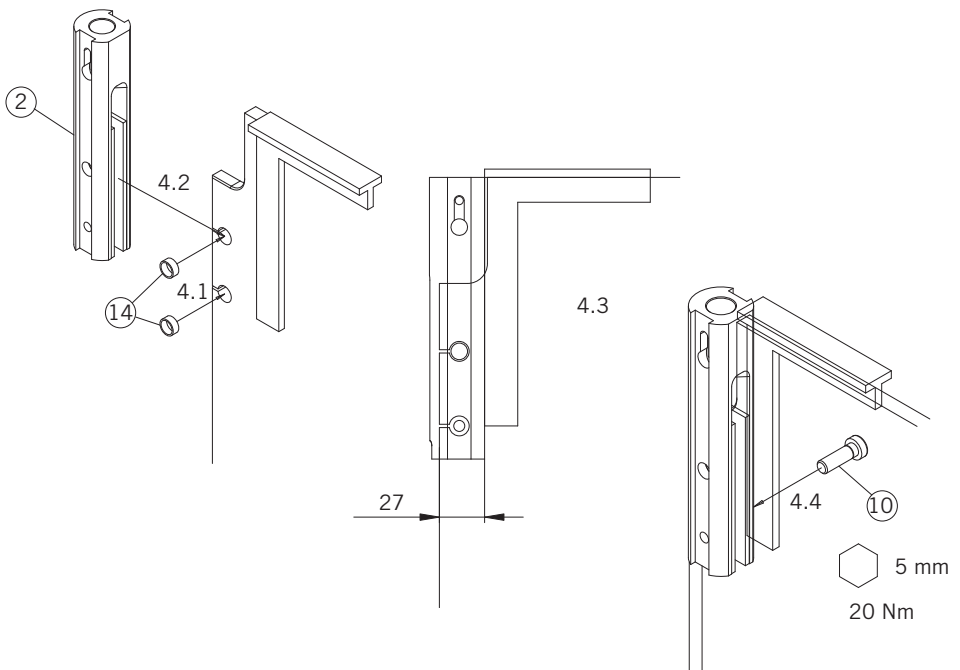
**2. Mount bottom pivoting fitting to glass**



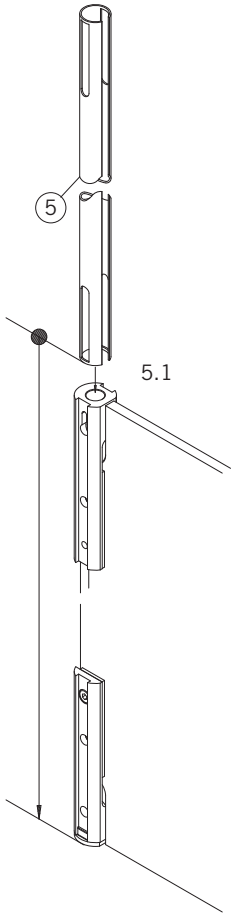
3. Oberen Drehbeschlag demontieren  
 3. Dismount top pivoting fitting



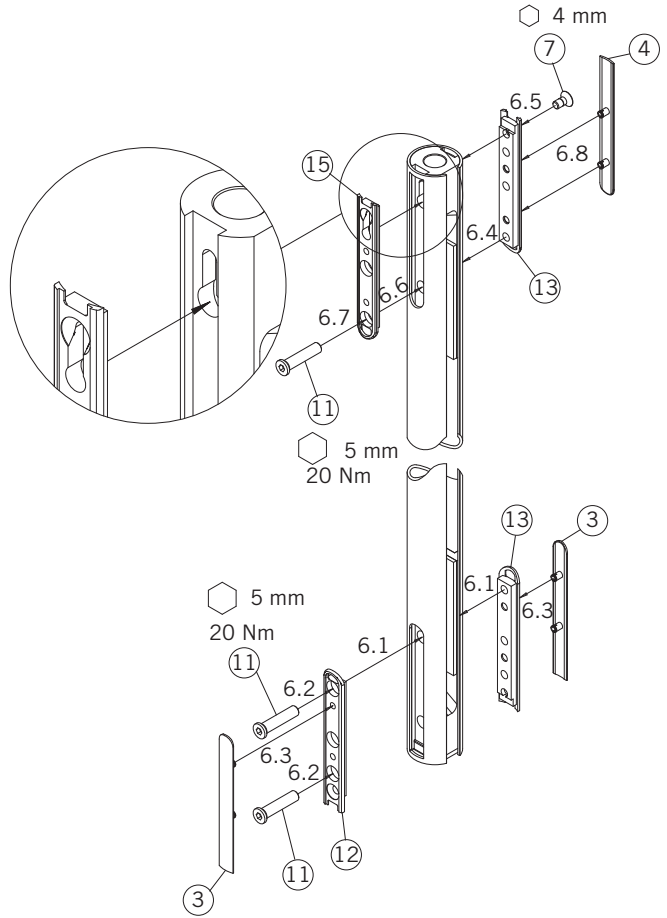
4. Oberen Drehbeschlag am Glas montieren  
 4. Mount top pivoting fitting to glass



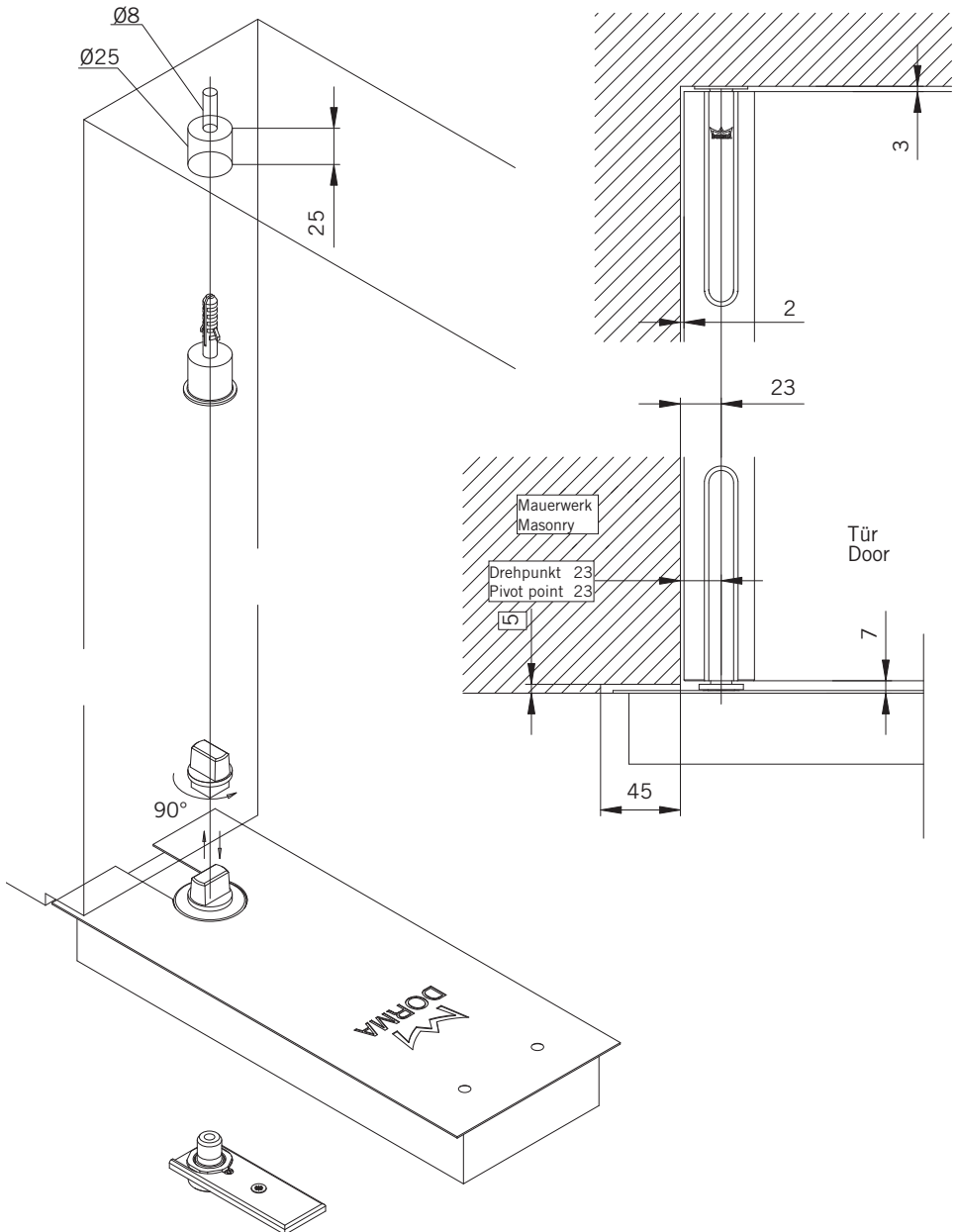
- 5. C-Profil aufchieben
- 5. Slide on C-profile



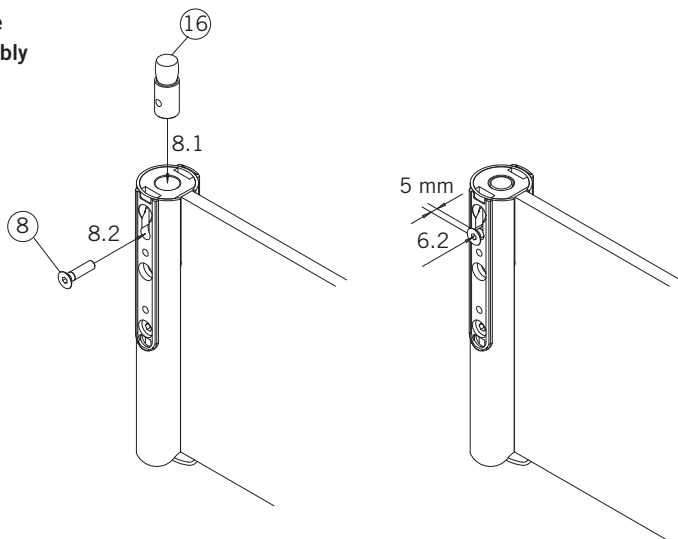
- 6. Drehstange komplettieren
- 6. Complete pivot rod



- 7. Oberes Drehlager und BTS oder Bodenlager montieren
- 7. Mount overpanel fitting and floor spring (DORMA BTS) or floor pivot bearing



**8. Türmontage**  
**8. Door assembly**

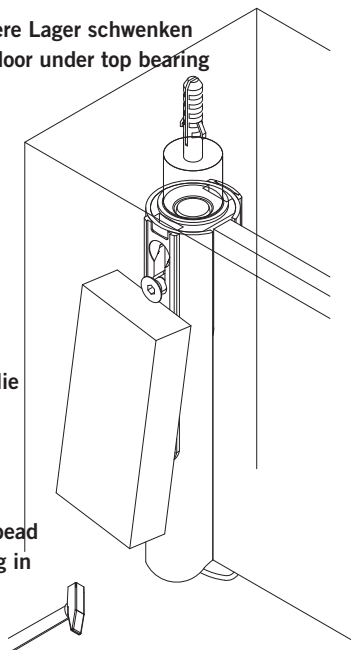


- 9. Glastür auf unteres Bodenlager setzen und unter das obere Lager schwenken**  
**9. Set glass door onto bottom floor pivot bearing and shift door under top bearing**
- 10. Bolzen zur Türmontage in Buchse schieben**  
**10. Slide bolt into bushing to install the door**

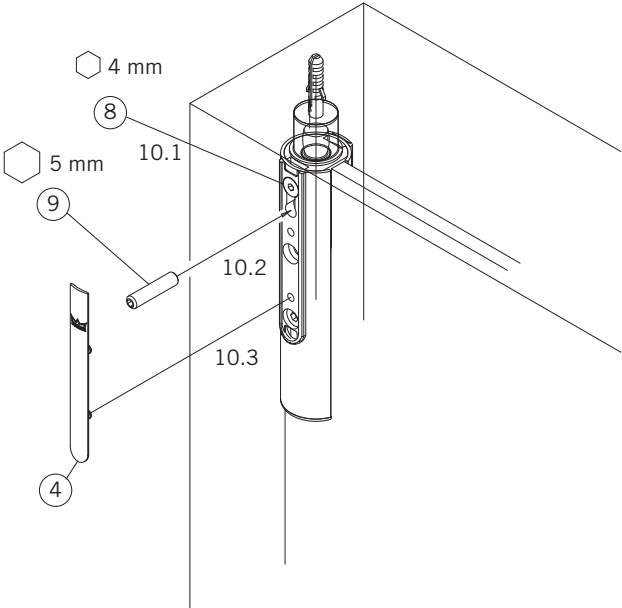


Der Bolzen muss mit etwas Kraft eingedrückt werden, um die Wulst in der Kunststoffbuchse zu überbrücken. Diese dient zur Sicherung des Beschlags bei eventuellem Glasbruch.

The bolt should be pressed with some power to bridge the bead in the plastic socket, which serves as securing for the fitting in case of breakage of glass.



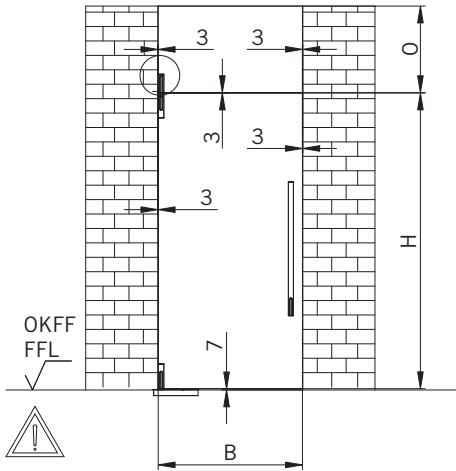
**11. Bolzen festschrauben und sichern**  
**11. Screw bolt and secure**



**Montageanleitung  
DORMA BEYOND  
Oberlichtbeschlag Wandverbinder**

**Mounting instruction  
DORMA BEYOND  
Overpanel fitting wall connector**

T [ } a 0 } Ö | ç [ å  
Ó ^ [ } å Ä [ ç ] } Ö å & [ • \ | ^ } } . Á ç } . Ä ç ^ ^ Á Á å • ç d ð ^ { Á



siehe Schritt 3  
see step 3

max. Höhe = 2200 mm  
max. Breite = 1000 mm  
max. Oberlicht = 600 mm  
Glasdicke 10 mm / 12 mm

Vor der Montage Glasflächen mit handelsüblichem Glasreiniger im Bereich der Klemmflächen reinigen.

max. height: = 2200 mm  
max. width = 1000 mm  
max. overpanel = 600 mm  
Glass thickness 10 mm / 12 mm

All glass clamping areas are to be cleaned with standard glass cleaning products prior to installation.



Keine Verdünnung verwenden  
Do not use thinner

① = Bauteil / Baugruppe  
Component

1., 1.1, ... = Montagefolge  
Mounting sequence

### Montagewerkzeug: Mounting tool:

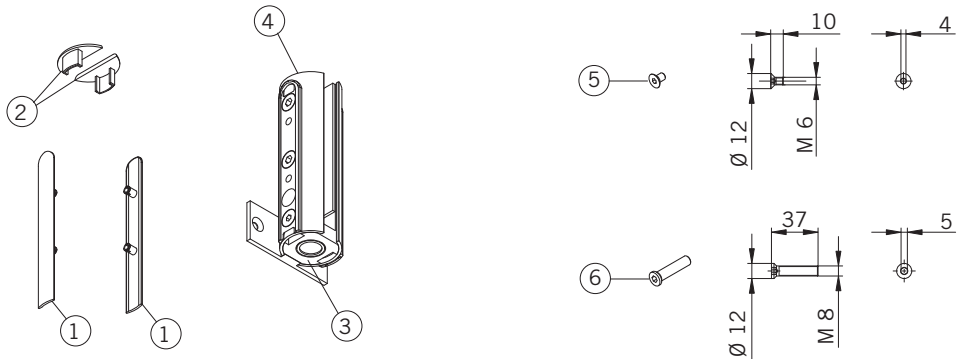


4 mm

5 mm



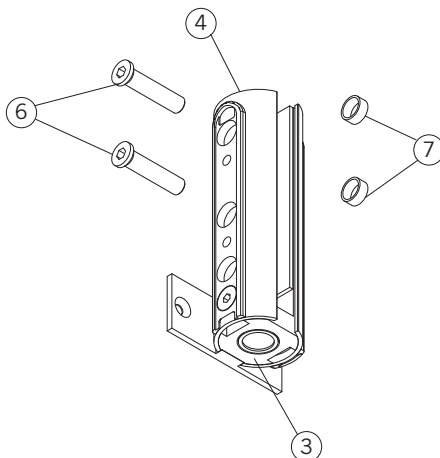
**Lieferumfang:  
Scope of delivery:**



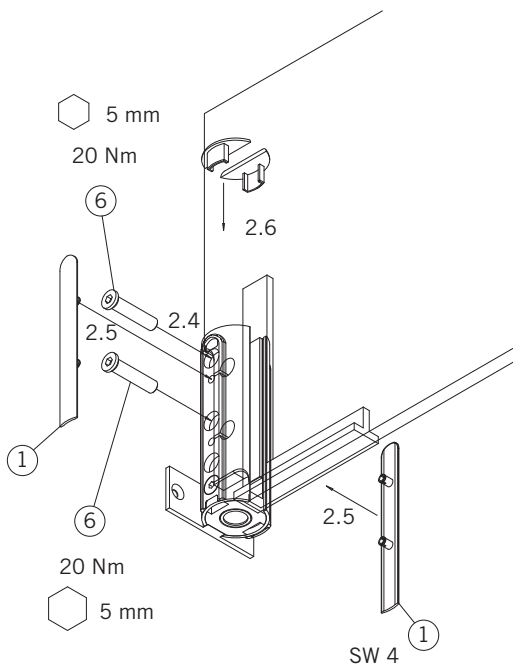
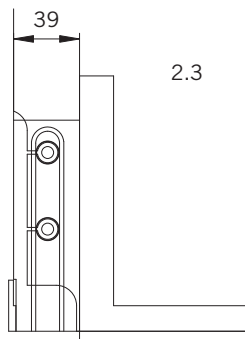
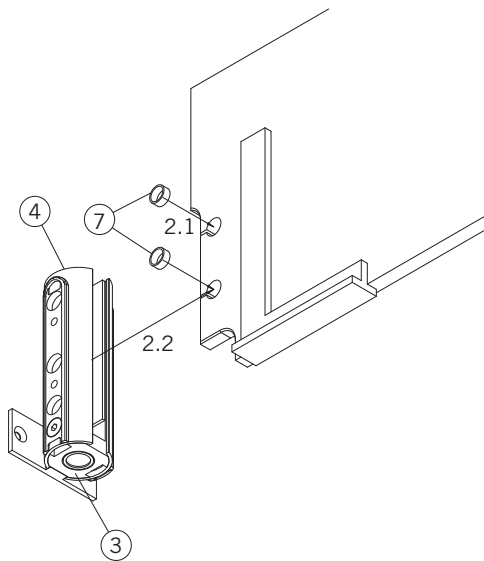
Schrauben und Dübel Bauseits  
(je nach Wandaufbau)  
z. Bsp. Senkschraube DIN 7997 6x... verzinkt  
oder Senkschraube DIN 7991 6x... verzinkt

Screws and plugs on site  
(depends on wall construction)  
e.g. countersunk screw DIN 7997 6x... zinc plated  
or countersunk screw DIN 7991 6x... zinc plated

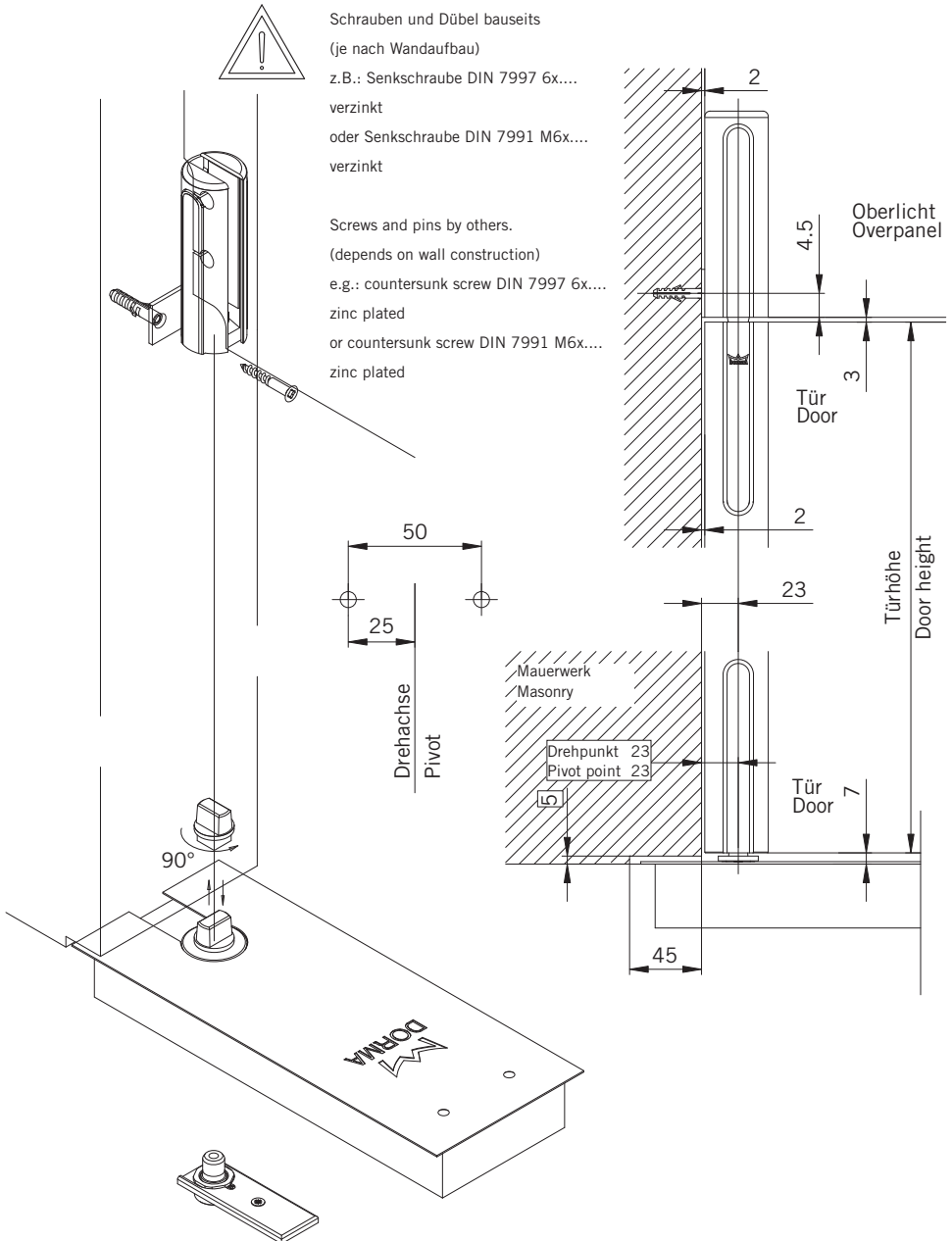
**1. Oberlichtbeschlag demontieren  
1. Dismount top pivoting fitting**



**2. Oberlichtbeschlag am Glas montieren**  
**2. Mount overpanel fitting to glass**



**3. Oberlichtbeschlag und BTS oder Bodenlager montieren**  
**3. Mount overpanel fitting and floor spring (DORMA BTS) or floor pivot bearing**



#### 4. Türmontage

#### 4. Door assembly

Die Montageanleitung hierfür finden Sie in den entsprechenden Beschlagsets.  
You will find the mounting instruction in the appropriate fitting sets.

#### **BEYOND Glasverbinder Art.-Nr. 30.320**

optional bei Situation mit beidseitigen Seitenteilen. Bauseits.

#### **BEYOND glass connector Art. No. 30.320**

optional in situations with fixed panels on both sides. On site.

